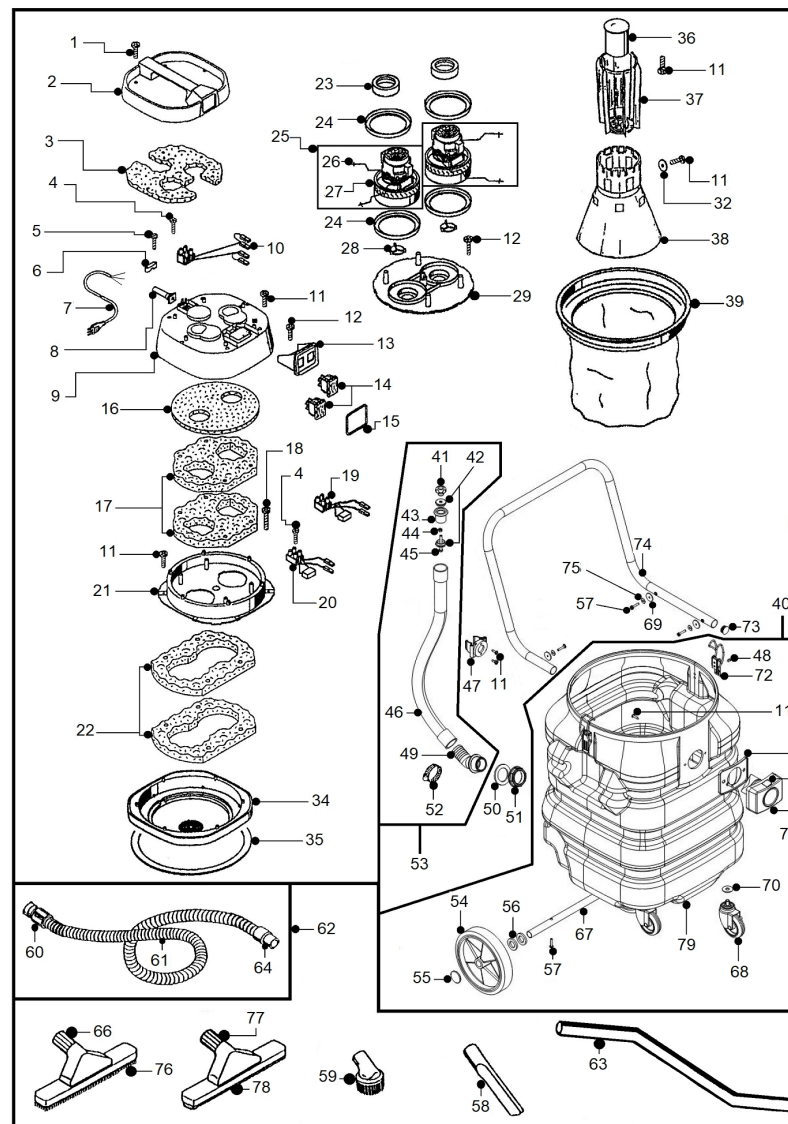




AS59 PD SP




AS59 PD SP

		Code	Description	Q.ty	Advisable	Note
1		2508591	SCREW TCC 5X22	8		
2		2209904	HANDLE AS58	1		
3		3000658	SOUND BAFFLE HANDLE	1		
4		2508500	SCREW TCC 3X20	3		
5		2508213	SCREW TC M3X16 PCS	2		
6		2001340	STRAIN RELIEF	1		
7		2507065	GREY MT.10 2X1 CABLE	1		
8		2502000	CABLE PROTECTION	1		
9		6003340	COVER AS58	1		
10		6100218	BINDING-CLAMP FOR AS58/59/60 RED	1		
11		2508570	SCREW 5X16 SP	18		
12		2508560	SCREW TCC 5X13 SP	8		
13		2502605	GASKET ELECTRICAL BOARD	1		
14		2506256	BIPOLAR SWITCH	2		
15		2502605	GASKET ELECTRICAL BOARD	1		
16		3000653	SOUND BAFFLE COVER	1		
17		3000651	SOUND BAFFLE WASHER SEPARATOR	2		
18		2508592	SCREW TCC 5X32	1		
19		6100200	OUTLET SOCKET W.CO	1		
20		6100202	TERMINAL BLOCK	1		


AS59 PD SP

		Code	Description	Q.ty	Advisable	Note
21		2009300	UPPER WASHER AS58	1		
22		3000650	SOUND BAFFLE MOTOR BASE	2		
23		2502518	GASKET WD100	2		
24		2502500	MOTOR GASKET WS1	4		
25		4386001	A40 230V MOTOR GROUP	2		
26		2506378	MOTOR WIRING WS2	4		
27		2505100	MOTOR	2		
28		2001360	VALVE WS45	2		
29		2009310	LOWER WASHER AS58	1		
32		2509030	GALVANIZED WASHER D.6X24X1	1		
34		2209804	MOTOR BASE PLASTIC	1		
35		2502410	BASE GASKET WS2	1		
36		RIC.6101100	COMPLETE FLOATING SYSTEM	1		
37		2000090	FLOATER CAGE	1		
38		2000095	FILTER BASKET AS580	1		
39		6830000	TEXTILE FILTER	1		
40		3440001		1		
41		35.0027.00	M6 KNOB	1		
42		2519510	BOTTON DRAIN PLUG	2		
43		2519515	DRAIN PLUG BODY	1		

AS59 PD SP

		Code	Description	Q.ty	Advisable	Note
44		23.0019.00	NUT M6 A2 DIN934 (200-634-016)	1		
45		23.0114.00	TE SCREW M 6X50 A2 DIN 933	1		
46		2519555	FLEXIBLE HOSE D.28	1		
47		2519070		1		Starting from SN 077340 - 07-2019
47		30.0035.00	CLAMP	1		Up to SN 077339 - 07-2019
48		2508833	RIVET 4,8 X 15	4		
49		2519056		1		
50		2502559		1		
51		2001402	GR.MARCHE KOMPACT 10 250V VORTECH	1		
52		2519091	HOSE CLAMP 25-45	1		
53		6010307		1		
54		2510041	REAR WHEEL DIAM. 200 MM.	2		
55		2510031	STARLOCK CAPPED D.20	2		
56		50.0007.00	BLACK PLASTIC WASHER H=5	4		
57		200-070-391	CAP 20XF.18-17	2		
58		2511610	CREVICE TOOL	1		
59		2511615	ROUND BRUSH	1		
60		2501190	M1 ABS CUFF DIAM. 40 MM.	1		
61		2511030	FLEXIBLE HOSE D.38	1		
62		RIC.6010500	COMPLETE BLACK FLEXIBLE HOSE D.40 MT.2,5	1		

AS59 PD SP

	Code	Description	Q.ty	Advisable	Note
63	2511600	SUCTION TUBE "S"	1		
64	2511390	PVC CUFF DIAM.40 MM.	1		
66	RIC.6010000	BRISTLE BRUSH	1		
67	2504324		1		
68	2510093	CASTER WHEEL D.75	2		
69	3000232	RUBBER WASHER Ø12X4 SP2	4		
70	2509062	RONDELLA 12 X 48 X 2 ZINCATA	2		
71	RIC.6000205	COMPLETE BLACK NYLON INTAKE D.50	1		
72	6100003	CLAMP FOR STEEL TANK	2		
73	2510066		2		
74	2504266		1		
75	2509012	WASHER D.5.3X15X1.2 A2 DIN9021	4		
76	2502900	REFIL BRUSH TOOL	1		
77	RIC.6010011	NYLON SQUEEGEE	1		
78	2502255	RUBBER FOR SQUEEGEE	2		
79	2207128	RIP PROTECTION 25X5.25	1		Up to SN 077339 - 07-2019
79	2207126	CANDIA 1000 CMP. FAIRING COVER	1		Starting from SN 077340 - 07-2019