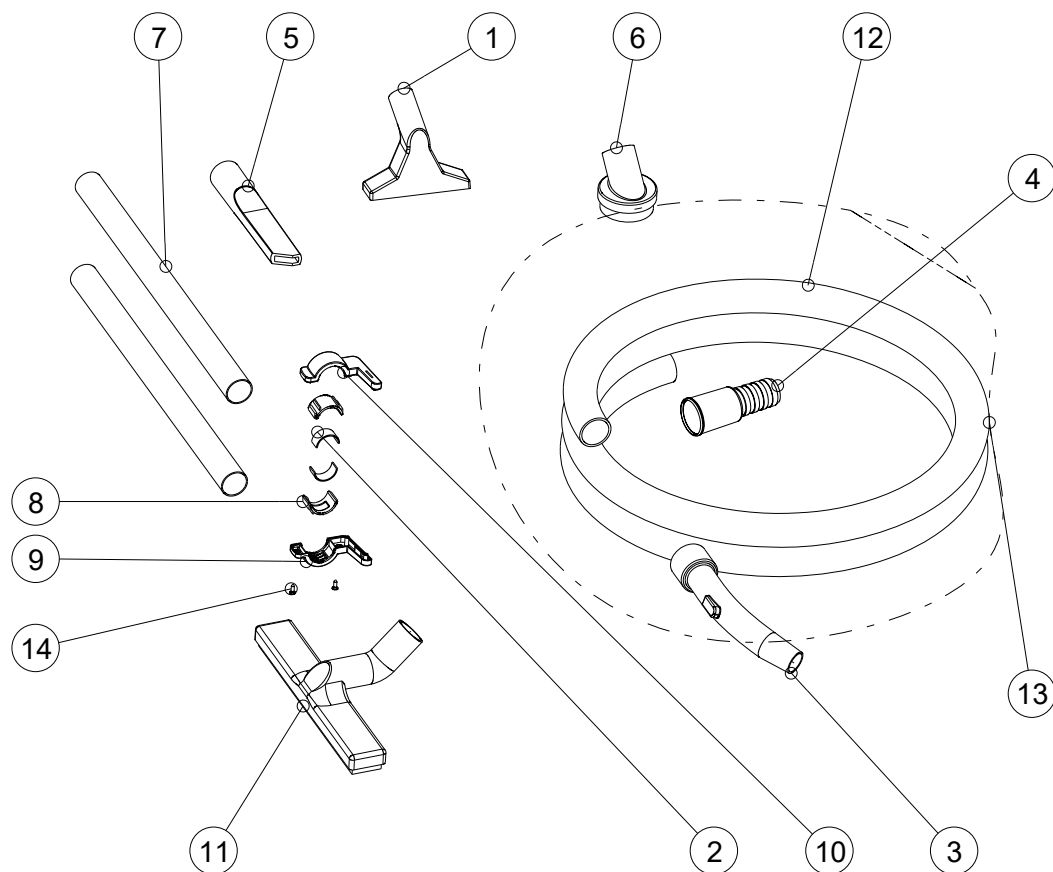


Pos	Code	Description
1	6004002	BASE AS5
2	2001340	STRAIN RELIEF
3	6000204	INTAKE AS5
4	2206411	Cover AS5 Restyling Yellow WD
5	2507036	POWER SUPPLY CORD
6	6100010	CLOSING CLAMP
7	2004253	BUMPER BAND
8	2501924	AS5 MOTOR STOPPING SYSTEM
9	2512702	CARTRIDGE FILTER (FILTERING SURFACE 0,29 M²)
10	3000615	Exhaust Air Filter AS5 EVO
11	3000613	Lateral Cooling Fireflex AS5 EVO
12	3000612	Cooling Fireflex AS5 EVO Head
13	6596010	Fleece Filter Bag AS5
14	2502403	GASKET BASE
15	2502556	INTAKE GASKET
16	2502504	AS5 NEW GEN. RUBBER GASKET
17	2506252	SWITCH SP9
18	3059504	TANK AS5 GREY
19	2200500	Handle AS5 Restyling Black
20	6100195	AS5 EVO wires
21	11-501	MOTOR 100W 230V FOR 909
22	855000210	CABLE PROTECTION
23	2510341	WHEEL AXLE
24	3005010	SOCKET PLUS CONDENSER
25	3004990	PROTECTIVE CAP
26	2510151	WHEEL D.50
27	2510094	WHEEL TG75
28	2501127	Flap AS5 Restyling Black
29	2506396	AS5 EVO Motor Wire
30	2508590	SCREW TCC 5X22 SP
31	2508591	SCREW TCC 5X22
32	2508500	SCREW TCC 3X20
33	2508580	Screw TCC 5x55
34	2506307	LITTLE HANDLE



Pos	Code	Description
1	856000101	UPHOLSTERY TOOL
2	3000009	Rubber AD.19X60X1
3	MK-030	CURVED HOSE
4	2005363	CUFF
5	856000071	CREVICE TOOL
6	856000061	ROUND BRUSH
7	01-341	EXTENSION TUBE 0.5 M ALU
8	2003620	Reduction D.32 Ghi AS2/5/6
9	2003612	RIGHT HALFSHELL BLACK FOR CONNECTION AS2/5/6
10	2003602	LEFT HALFSHELL BLACK FOR CONNECTION AS2/5/6
11	2511523	D320 DRY FLOOR TOOL
12	2511000	FLEXIBLE HOSE D.33
13	6010604	FLEXIBLE HOSE 2,5 M
14	2508523	TSP SCREW 4X12 PAT ZNB