



13301710001

**TOOL PRO WDA 40 M AS**

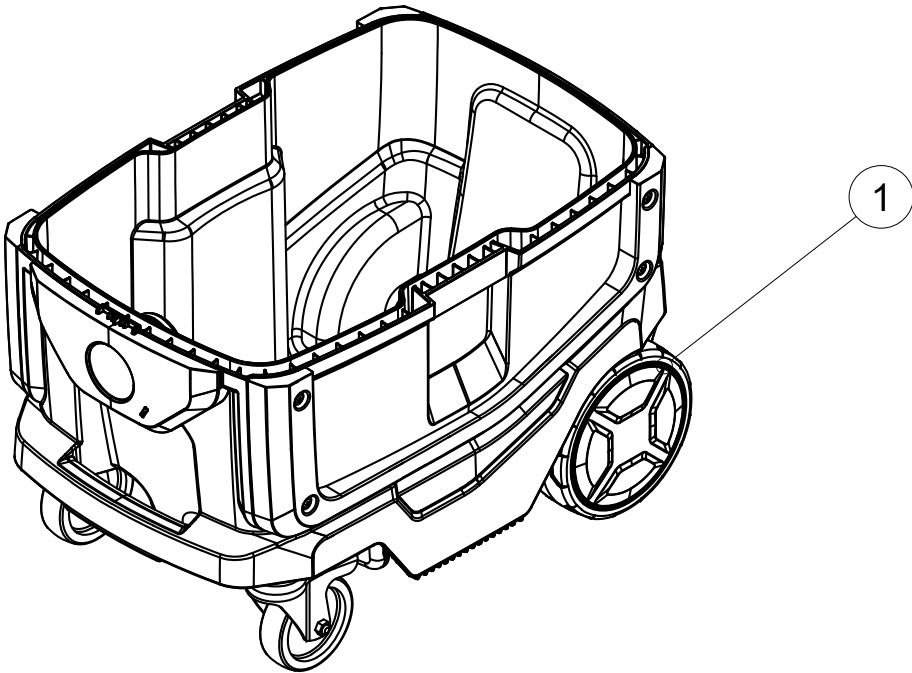
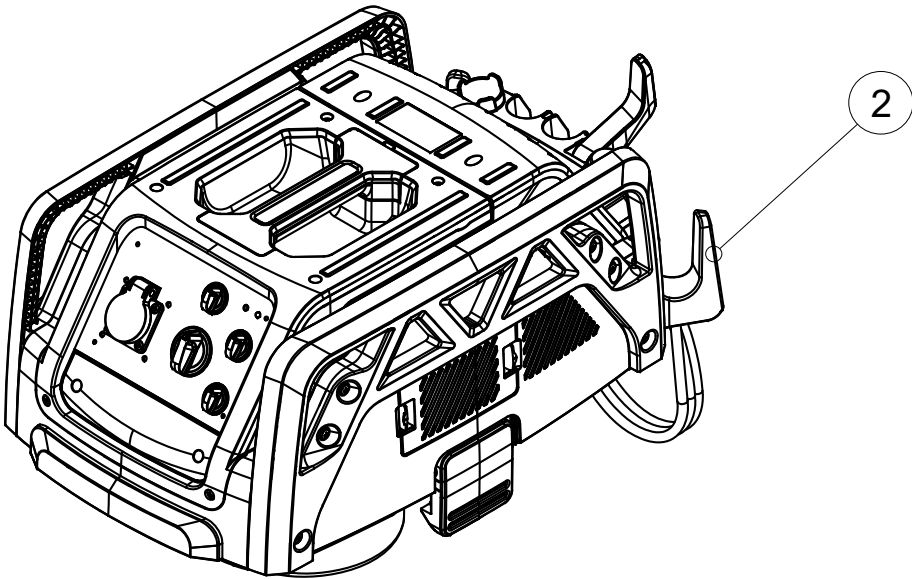
SPARE PARTS

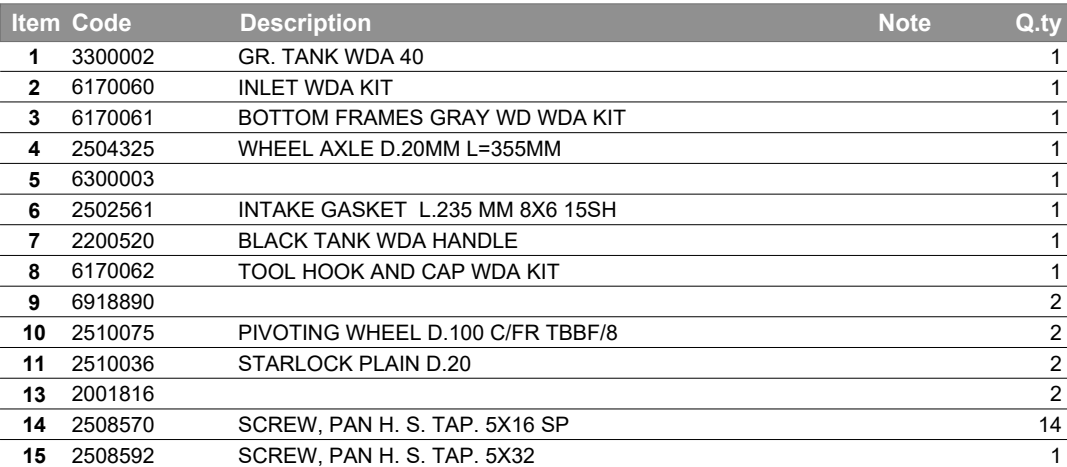
Index

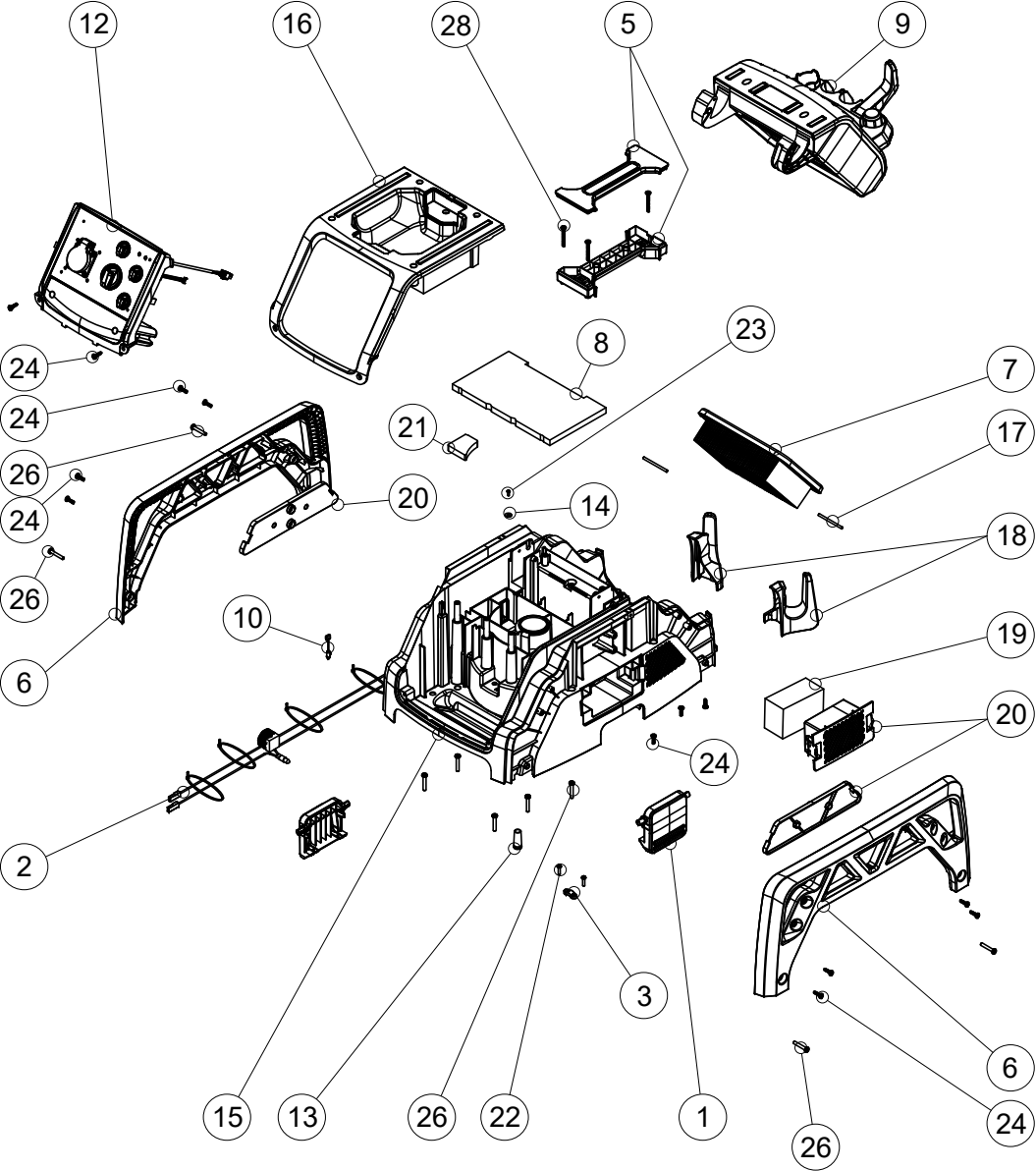
Table	Code	Page
T PRO WDA 40 M AS		181
Gr. Tank WDA 40		182
Head T PRO WDA 40 M		183
Head T PRO WDA 40 M		184
Control Panel T PRO WDA 40 M AS CMP		185
Gr. Counter T Pro WDA 40		186
Gr. Accessories D36 WDA 40 AS		187
Handle kit		188
Pneumatic tool kit		189
Case connection kit		190
Pneumatic tool kit		191

Article Number:

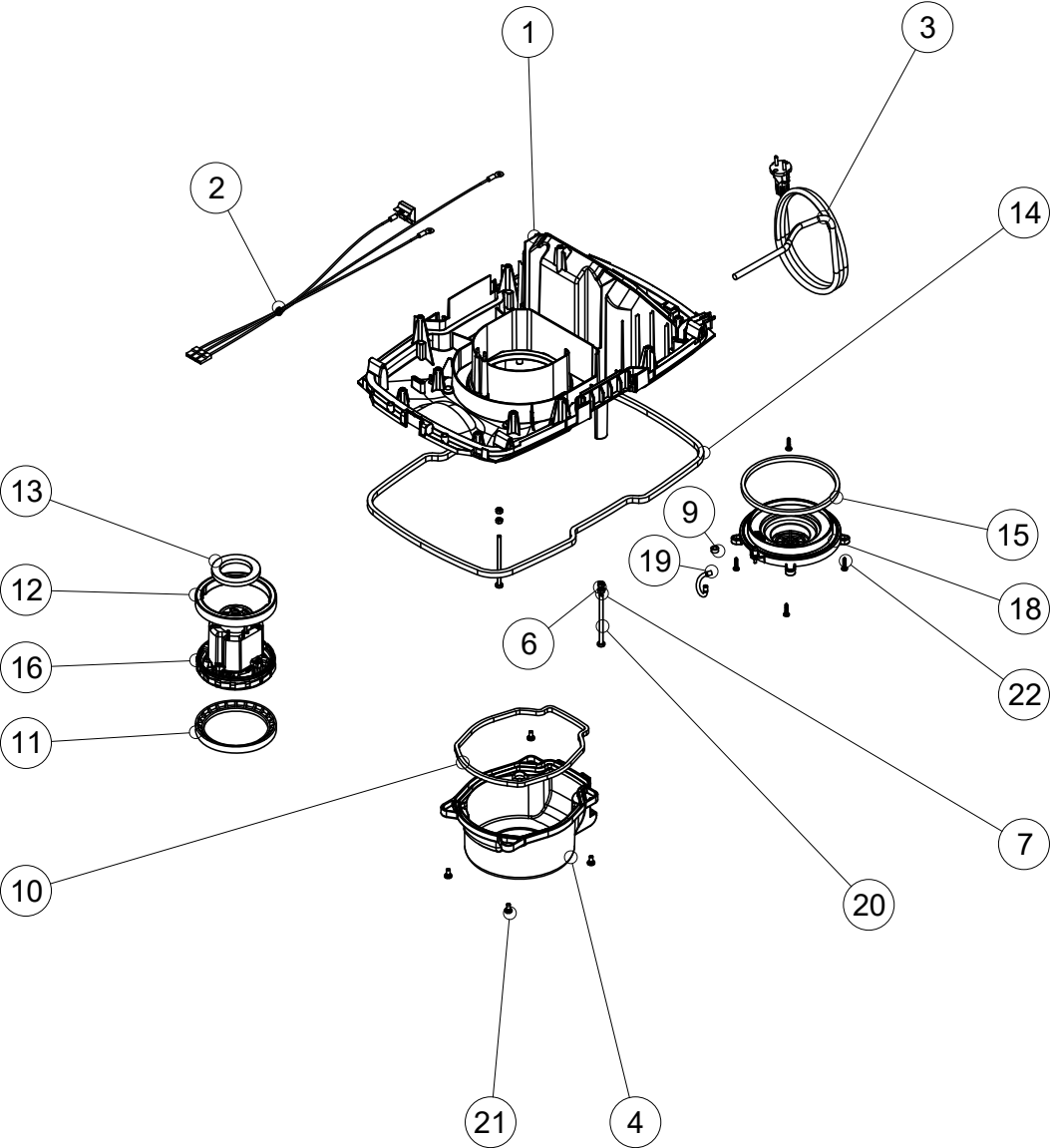
Item Code	Description	Note	Q.ty
-----------	-------------	------	------



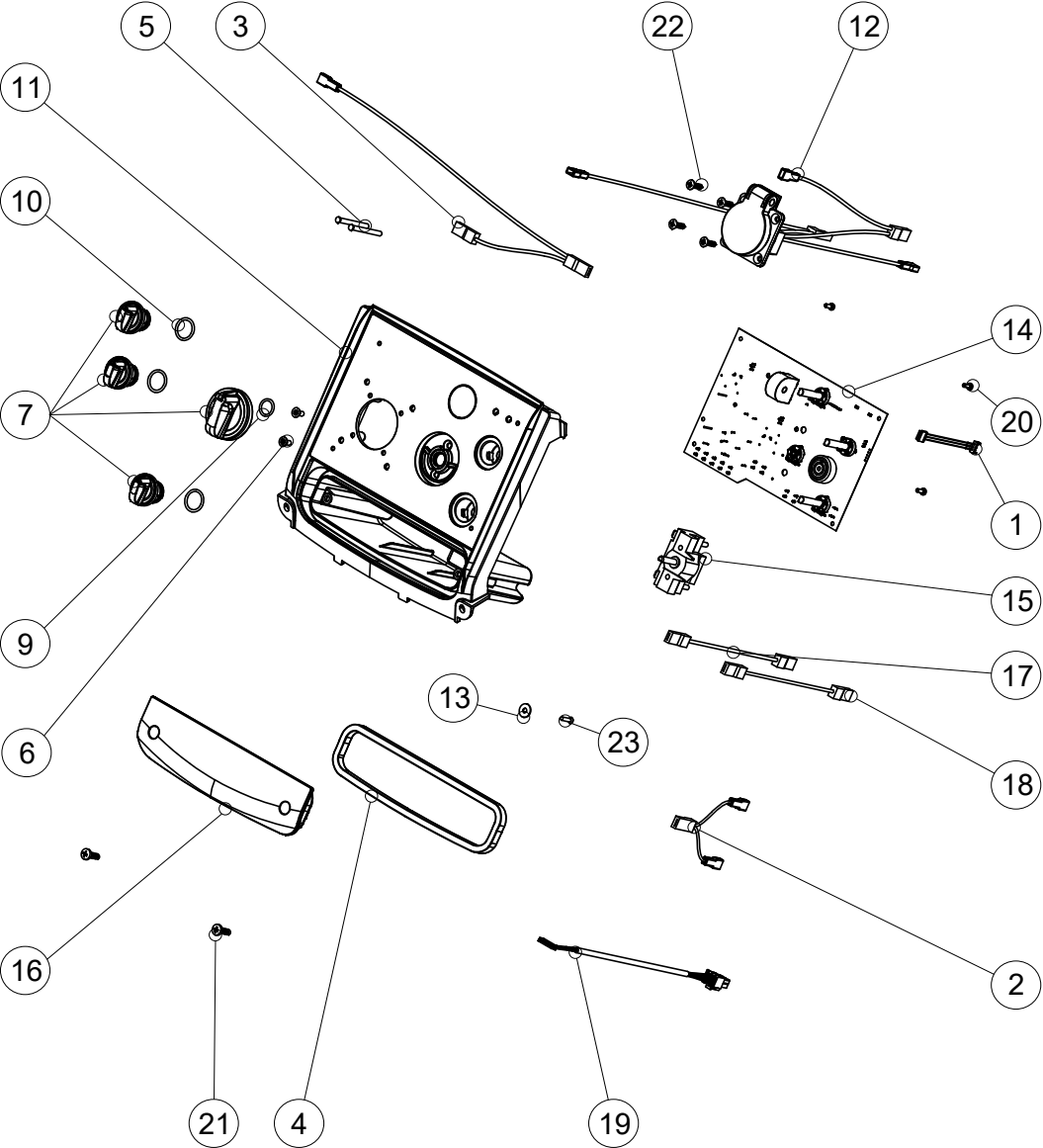




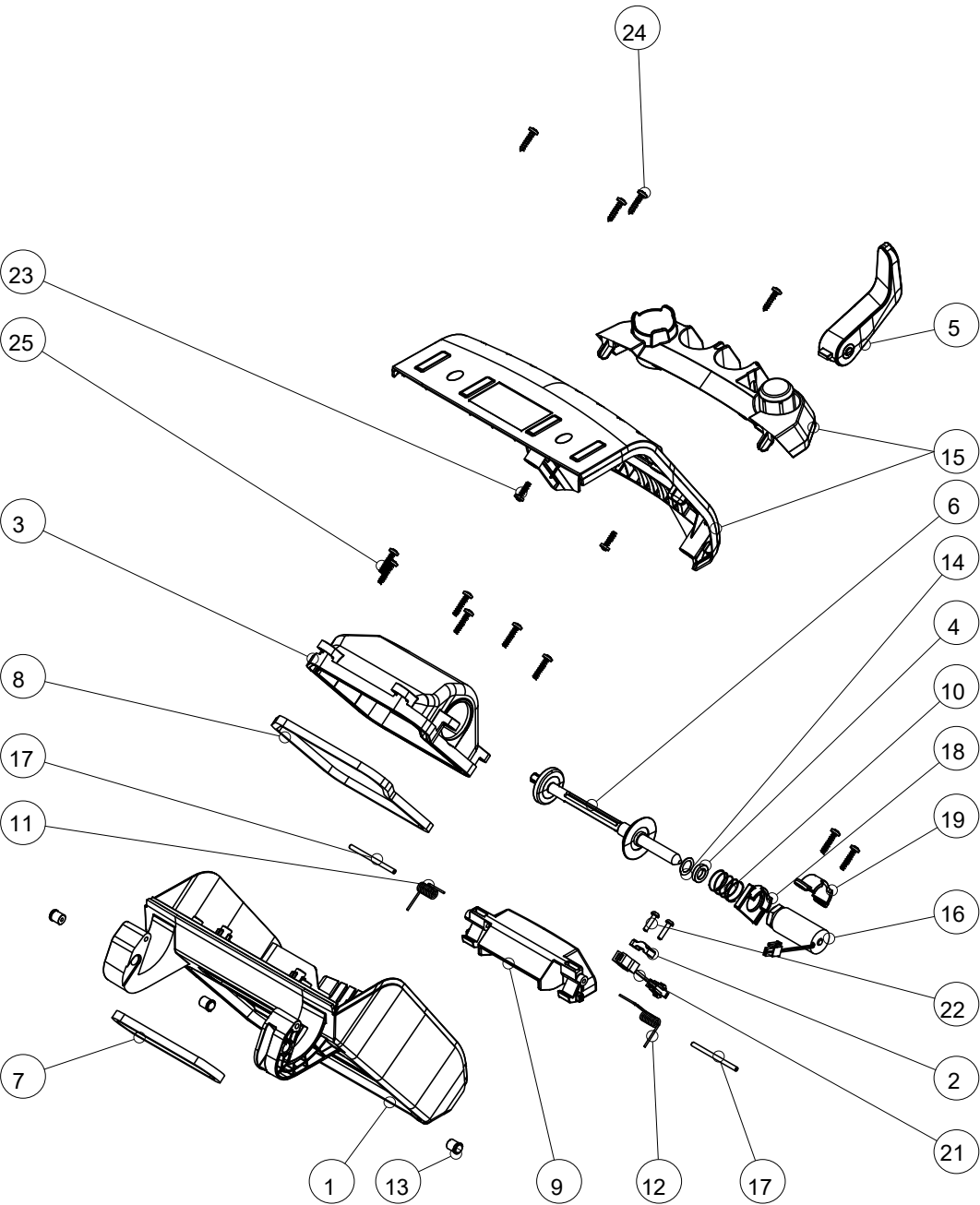
Article Number:				
Item	Code	Description	Note	Q.ty
1	2500004	HEAD-TANK HOOKING		2
2	6100401	WDA MOTOR WIRED		1
3	12-109	BLACK SMALL STAPLE		1
5	6170063	HANDLE COVER WDA KIT		1
6	2207848	UPPER FRAME WD GRAY		2
7	2512772	PTFE FLAT FILTER (M FILTRATION CLASS)	Recommended	1
8	3000162	UPPER COVER FIREFLEX TOOLS		1
10	2506457			1
13	2502082	FAIRLEAD 12.7X9.5X3		1
14	23.0011.00	FLAT WASHER OVERSIZED D.4X12 A2 DIN 9021N		1
15	2200305	PRINCIPAL BODY		1
16	2200323	UPPER COVER		1
17	2504164	CYLINDRICAL PINS D4(H8)X60MM ISO		2
18	6170064	CORRUGATED SUPPORT WDA KIT		1
19	3000619	INLET AIR FILTER		1
20	6170065	BLACK INLET FILTER COVER WDA KIT		1
21	3000237	GASKET WDA TMF		1
22	2508529	SCREW, PAN H. S. TAP. 4X18 SP GALV.		2
23	2508501	SCREW, PAN H. S. TAP. 2,9X9,50 SP		1
24	2508570	SCREW, PAN H. S. TAP. 5X16 SP		19
26	2508592	SCREW, PAN H. S. TAP. 5X32		11
28	13-968	SCREW, TEB 5X40 POLY Z.B.		3



Article Number:				
Item	Code	Description	Note	Q.ty
1	6003906	BASE HEAD T PRO WDA 40 AS		1
2	3005100			1
3	2507295	POWER CABLE 3 X 1,5 MT.7,5 EXP		1
4	2207846	H FILTER COVER		1
6	23.0209.00	SELF-LOCKING NUT M 6 A4 R. DIN.985		2
7	23.0019.00	NUT M6 A2 DIN934 (200-634-016)		2
9	2502581			1
10	2502574	H FILTER GASKET L.660 MM 8X6		1
11	2502539	POWER LINE INFERIOR MOTOR GASKET		1
12	2502571	WDA INTERMEDIATE GASKET		1
13	2502572	UPPER MOTOR GASKET		1
14	2502402			1
15	2502564			1
16	2505126	MOTOR 1100W 230V	Recommended	1
18	2001818	MOTOR CAP		1
19	2010233	SILICONE TUBE 3X5 L.95MM WDA		1
20	2508551	SCREW M6X100 INOX A2 DIN 7985		2
21	2508275	SCREW, LENS M6X12 INOX		4
22	2508591	SCREW, PAN H. S. TAP. 5X22		4

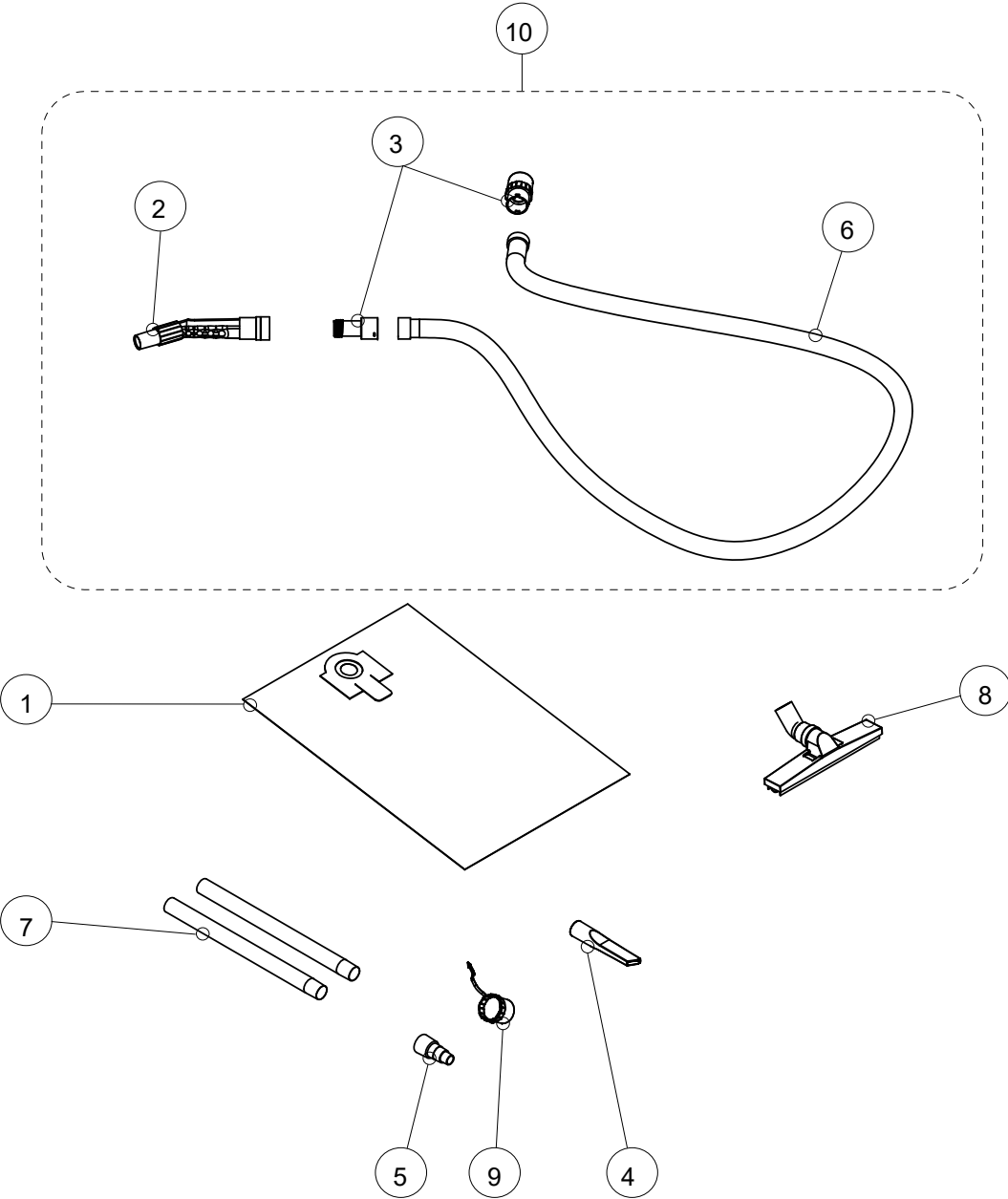


Article Number:				
Item	Code	Description	Note	Q.ty
1	2506801			1
2	2506814			1
3	2506813			1
4	2502577			1
5	2506292			1
6	2508105	SCREW, C.R.C.F.H. M4X10 4.8 ZB DIN965		2
7	6170066	KNOB WDA KIT		1
9	2001307	O-RING 2050 - 12X1,78		1
10	2502562	O-RING ORM 16 X 2		3
11	6800012			1
12	3005101	TOOL SOCKET WDA WIRED		1
13	23.0011.00	FLAT WASHER OVERSIZED D.4X12 A2 DIN 9021N		1
14	2506026			1
15	2506298	ROTARY SWITCH 3032/04A		1
16	2501111		Start to SN 0721	1
16	2501109		Up to SN 0721Xl	1
17	2506808	BRAID SELECTOR PCB BLUE		1
18	2506809			1
19	2506804	PCB 6 PIN WIRES		1
20	2508501	SCREW, PAN H. S. TAP. 2,9X9,50 SP		4
21	2508570	SCREW, PAN H. S. TAP. 5X16 SP		2
22	2508519	SCREEW 3,9X16		4
23	13926p	SCREW, C.R.C.H.T. 3X16 CP ZB DIN7982		1



Article Number:				
Item	Code	Description	Note	Q.ty
1	2517320	BOTTOM FLAP		1
2	12-109	BLACK SMALL STAPLE		1
3	2005003	VALVE COVER		1
4	2601123	SPACER TEFLON 18X11X3.7		1
5	2500072	CABLE HOOK		1
6	6300000	REVERSE AIR FLOW VALVE		1
7	2502573	GASKET BASE FLAP L.290 MM 8X6 15		1
8	2502576	VALVE COVER GASKET L.590 MM 8X6		1
9	2209500	FLAP HANDLE		1
10	2500932	SOLENOID SPRING 2N		1
11	2500931	HANDLE SPRING RIGHT WDA		1
12	2500928	HANDLE SPRING LEFT WDA		1
13	2506167	SMOOTH PRESSOR Ø10 F1 = 13N		3
14	27.0008.00	TRUST WASHER		1
15	6170067	COVER AND SUPPORT WDA KIT		1
16	2506157	TUBULAR SOLENOID		1
17	2504164	CYLINDRICAL PINS D4(H8)X60MM ISO		2
18	2504898	SOLENOID CENTERING BRACKET		1
19	2504899	SOLENOID SUPPORT BRACKET		1
21	2506800			1
22	2508529	SCREW, PAN H. S. TAP. 4X18 SP GALV.		2
23	2508570	SCREW, PAN H. S. TAP. 5X16 SP		2
24	2508591	SCREW, PAN H. S. TAP. 5X22		4
25	2508590	SCREW, PAN H. S. TAP. 5X22 SP		8



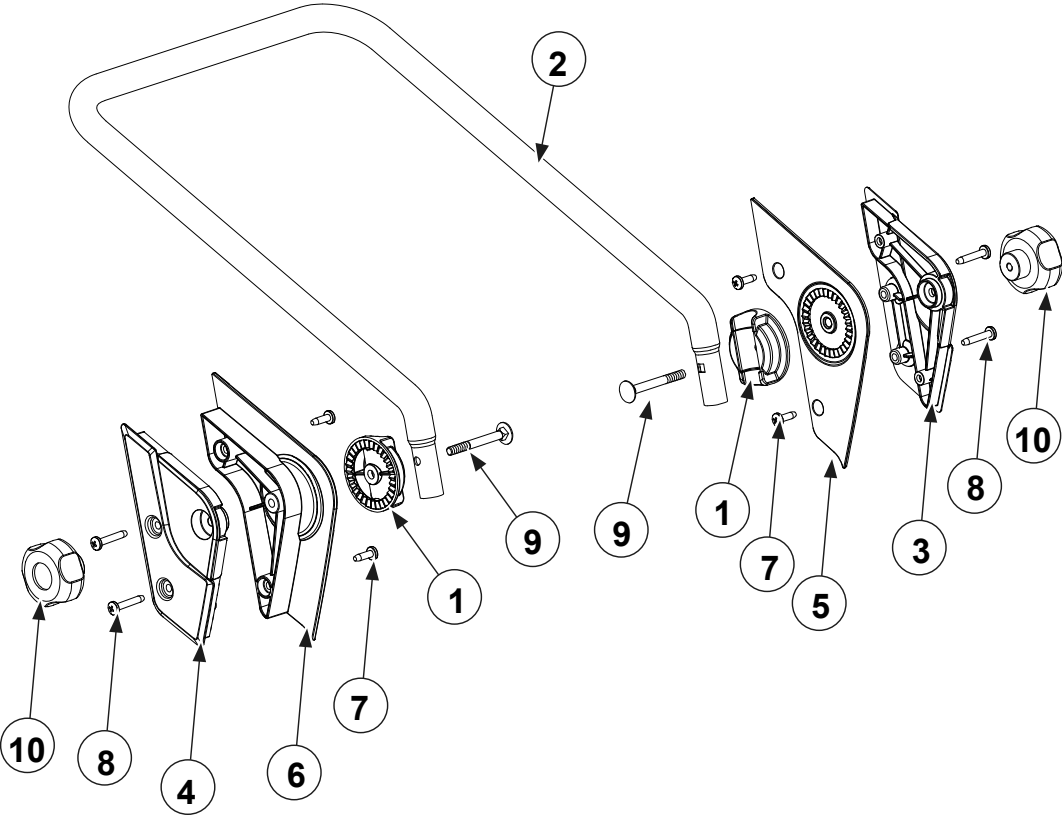


Article Number:

Item	Code	Description	Note	Q.ty
1	3001039	FLEECE FILTER BAG L 20 X 10		1
2	2511435	CURVED HANDLE Ø36 CONDUCTIVE		1
3	6170068	SLEEVE COUPLING WDA KIT		1
4	2511640	ANTISTATIC CREVICE TOOL D.36		1
5	2511406	ANTISTATIC CONNECTION D. 33		1
6	2511213	FLEX TUBE 4 MT Ø33 AS		1
7	2511500	SUCTION TUBE 0,5 M		2
8	6010042	ANTISTATIC DRY FLOOR TOOL P340 Ø 36		1
9	6170062	TOOL HOOK AND CAP WDA KIT		1
10	6010530	ANTISTATIC FLEXIBLE HOSE D.33 - 4 M		1

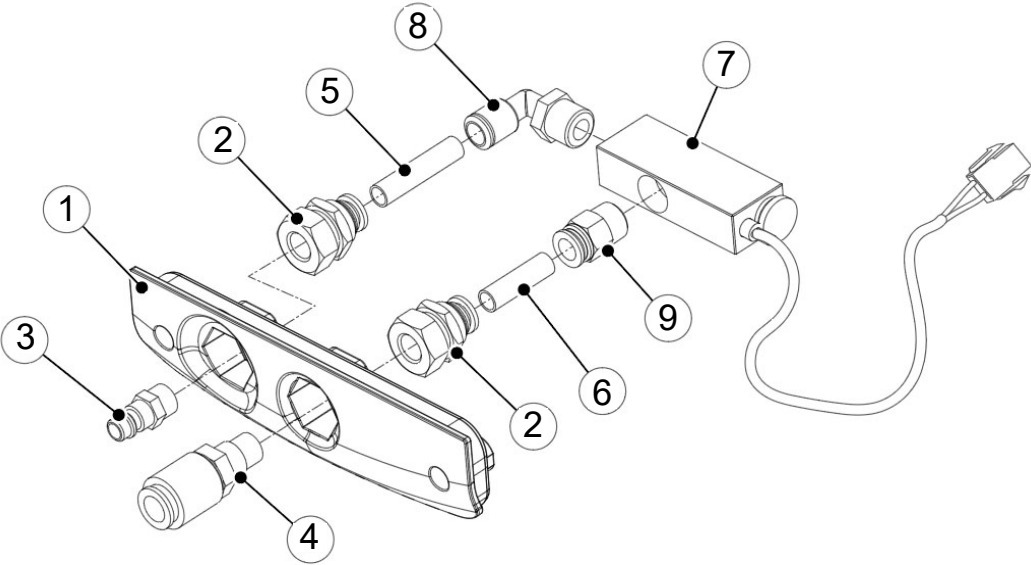
Article Number:

Item	Code	Description	Note	Q.ty
1	2207857			2
2	2504257			1
3	2207858			1
4	2207859			1
5	2207853			1
6	2207855			1
7	2508570	SCREW, PAN H. S. TAP. 5X16 SP		4
8	2508592	SCREW, PAN H. S. TAP. 5X32		4
9	2508533			2
10	2506313			2



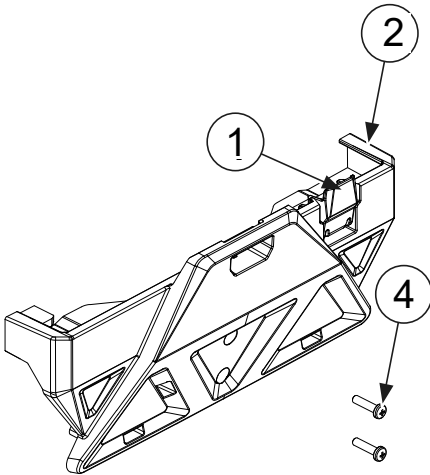
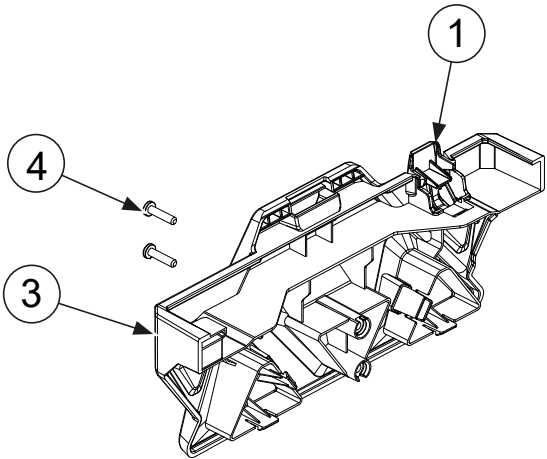
Article Number:

Item	Code	Description	Note	Q.ty
1	2501141			1
2	2519122			2
3	2601017	RAPID INSERTION 1/4"M. GAV 113/1		1
4	2601003	UNIVERSAL RAPID INSERTION 1/4"M.GAV UNI/1		1
5	30.0072.00	RILSAN ROLL HOSE D.10/8		0,05
6	30.0072.00	RILSAN ROLL HOSE D.10/8		0,04
7	6689143			1
8	2519116			1
9	2519117			1



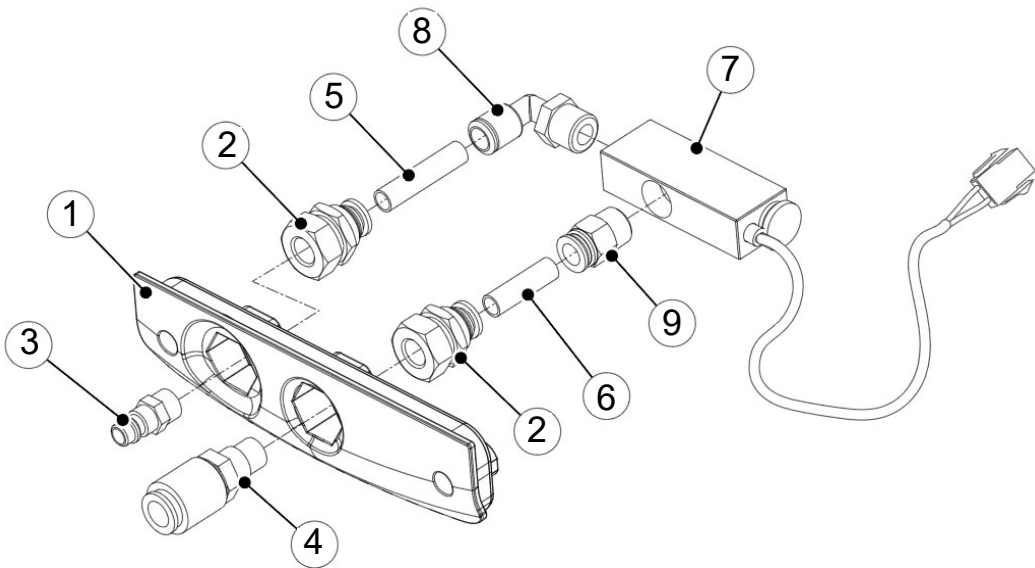
Article Number:

Item	Code	Description	Note	Q.ty
1	2200328			2
2	2200326			1
3	2200327			1
4	2508590	SCREW, PAN H. S. TAP. 5X22 SP		4



Article Number:

Item	Code	Description	Note	Q.ty
1	2501141		Start to SN 0721	1
1	2501107		Up to SN 0721Xl	1
2	2519122			2
3	2601017	RAPID INSERTION 1/4"M. GAV 113/1		1
4	2601003	UNIVERSAL RAPID INSERTION 1/4"M.GAV UNI/1		1
5	30.0072.00	RILSAN ROLL HOSE D.10/8		0,05
6	30.0072.00	RILSAN ROLL HOSE D.10/8		0,04
7	6689143			1
8	2519116			1
9	2519117			1



DEALER

**Ghibli & Wirbel S.p.A.**

