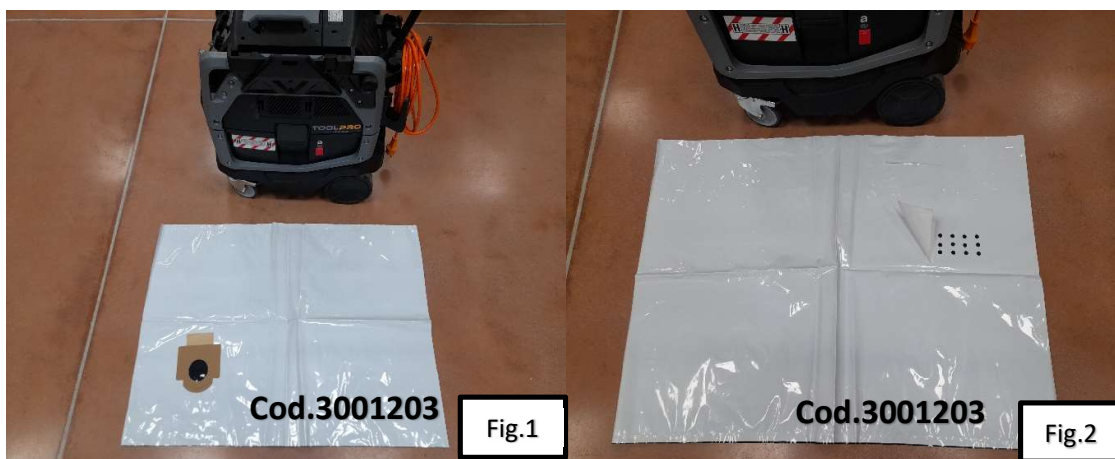
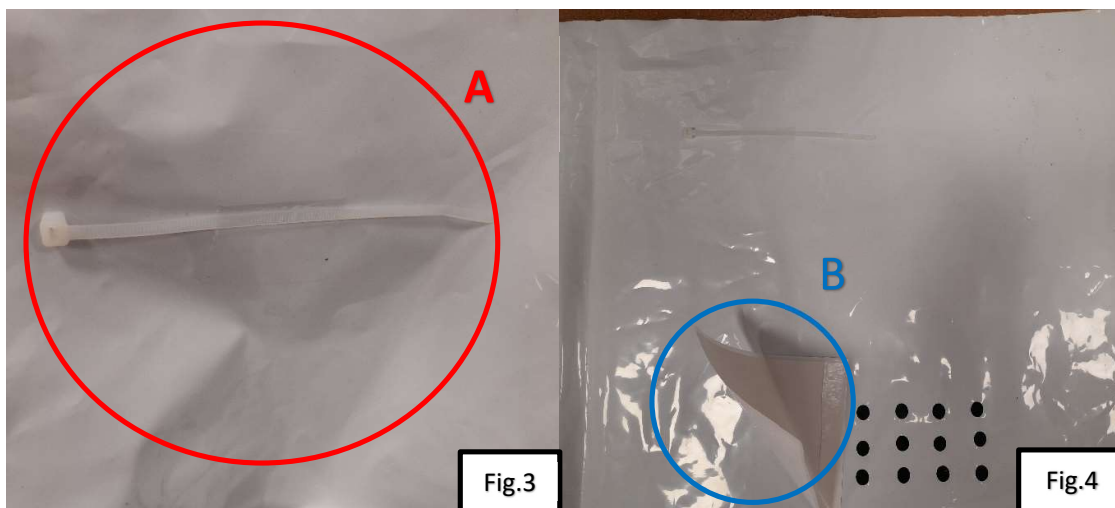


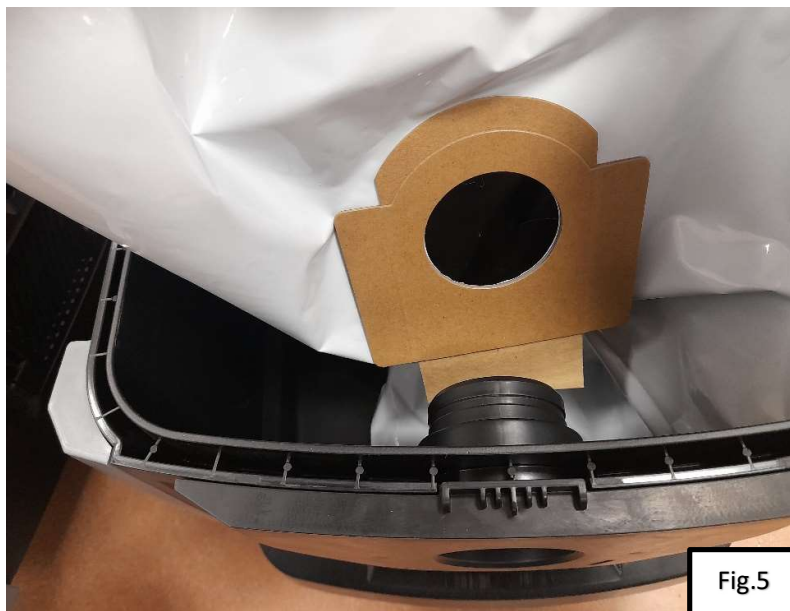
## Cod.3001203 - Filter PE WDA SAFETY BAG



Filter PE for vacuums WDA (Safety Bag) front with inlet (Fig.1) and rear view (Fig.2).



The bag is equipped with a nylon strap (Fig.3) for closing once full. There are holes in the rear part (Fig.4), which can be closed using the proper adhesive flap.

**Fig.5**

Remove the WDA head and fit the PE filter into the nozzle, keeping the white part against the walls of the container.

**Fig.6**

The special perforated window (closable) remains on the side opposite the inlet (Fig.6). Fit the bag by turning the edges over the collection container.



Fig.7

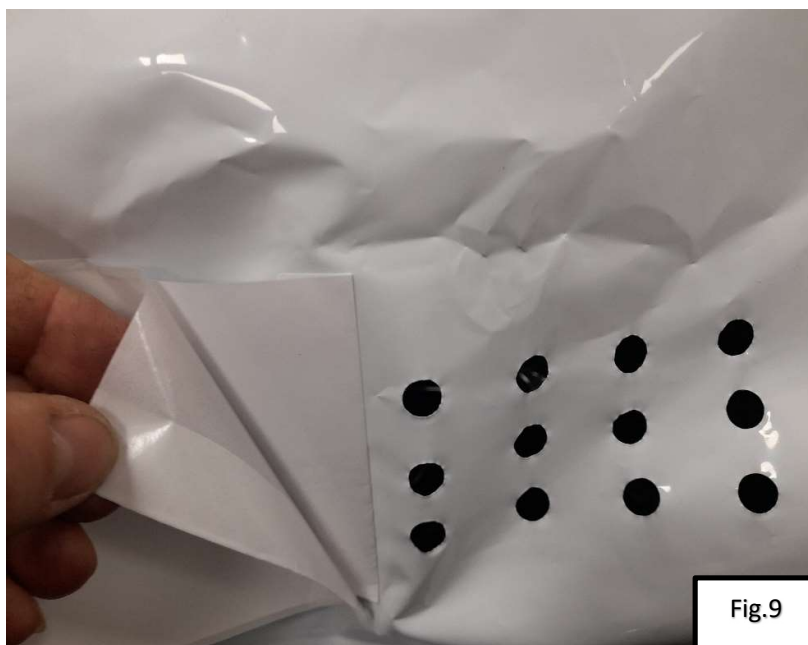
Reposition the head over the collection bin and close the two side locking closures.



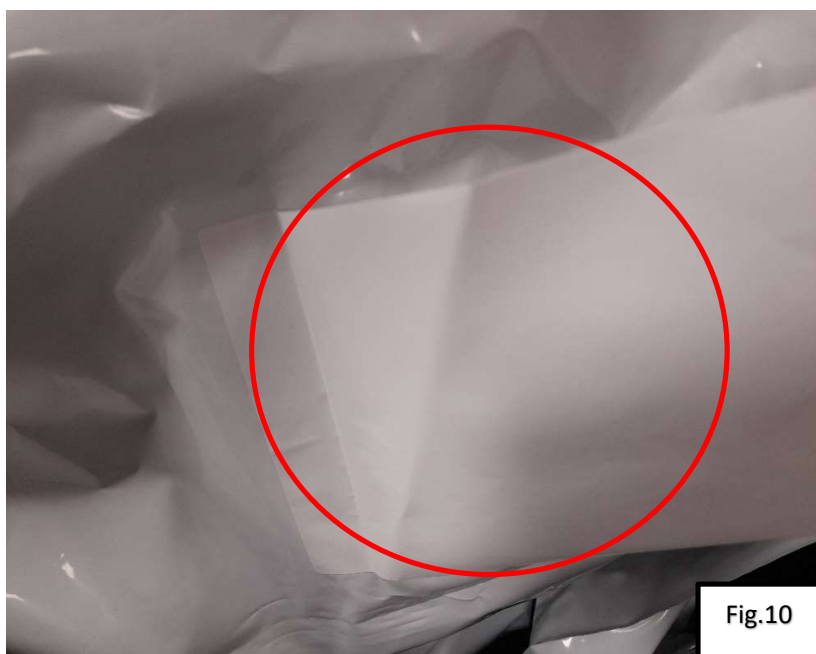
Fig.8

To replace the PE bag, remove it from the outlet side, taking care to pull the closing tab.





Close the rear perforated window using the appropriate adhesive tab after removing the protective film (Fig.9).



Closed holes.

**Fig.11**

Remove the PE filter from the edges of the drum and collect it in a bag (Fig.12), closing it with the supplied clamp (Fig.11).

**Fig.12**