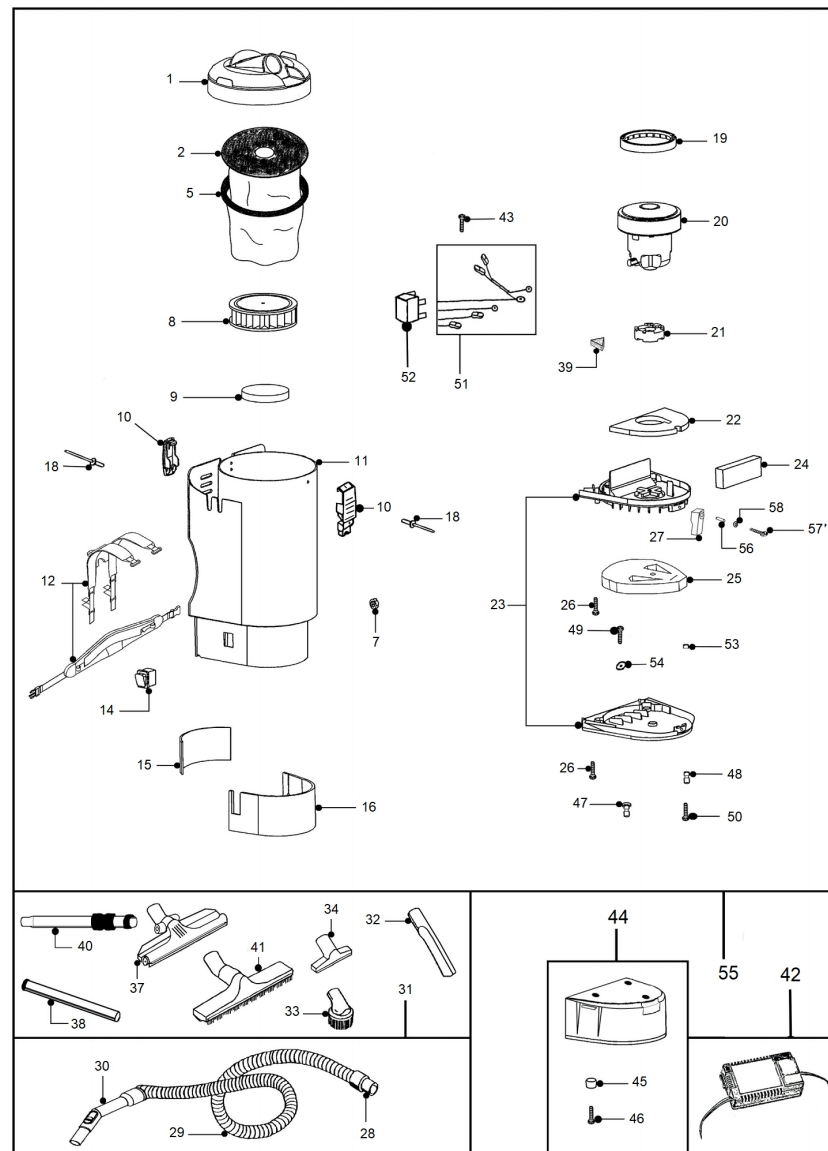




## T1 BC LITHIUM SWIFT




## T1 BC LITHIUM SWIFT

		Code	Description	Q.ty	Advisable	Note
1		2200271	TOP COVER GREY WD	1		
2		6588035	PAPER FILTER BAG L 3,3 X 10	1		Optional
2		6588061	FLEECE FILTER BAG L 3,3 X 10	1		Optional
5		6588010	TEXTILE FILTER	1		
5		6588011	CLOTH FILTER BAG	1		Optional
7		2001405	BLACK PLUG D.19 FOR CABLE WITH HOLE T1	1		
8		2512749	CARTRIDGE FILTER (FILTR. SURF. 0,42 SQM)	1		
8		RIC.2512751	HEPA CARTRIDGE FILTER (FILT. SURF. 0,42 SQM)	1		Optional
9		3000581	AIR OUTLET FILTER	1		
10		6100010	CLOSING CLAMP	2		
11		2200280	CASING PP T1(DOUBLE LOCKING)YELLOW WD	1		
12		RIC.6588026	REINFORCED SHOULDERS STRAP	1		
14		2506252	SWITCH SP9	1		
15		3000590	T1 TANK BACK FIREFLEX	1		
16		3000588	T1 TANK FRONT FIREFLEX	1		
18		2508833	RIVET 4,8 X 15	2		
19		3000214	T1 MOTOR LOWER GASKET	1		
20		2505131	DOMEL MOTOR 24V 330W 463.3.208-2	1		
21		3000216	UPPER MOTOR GASKED	1		
22		3000585	UPPER FIREFLEX	1		

## T1 BC LITHIUM SWIFT

	Code	Description	Q.ty	Advisable	Note
23	4058843	INTERMEDIUM CAP GROUP+BOTTOM WITH HOLE T1BC	1		
24	3000587	COVER FIREFLEX	1		
25	3000580	COVER FILTER	1		
26	2508529	SCREW TCC 4X18 SP	3		
27	2501342	STOP BATTERY CASE LEVER WITH HOLE T1 BC	1		
28	2511423	TURNING CUFF	1		
29	RIC.6010608	BLACK FLEXIBLE HOSE T1+SLEEVE+RING MT1,5	1		
30	MK-030	CURVED HOSE	1		
31	6010609	FLEXIBLE HOSE 1,5 M	1		
32	856000071	CREVICE TOOL	1		
33	856000061	ROUND BRUSH	1		
34	856000101	UPHOLSTERY TOOL	1		
37	2512594	RD 285 DRY FLOOR TOOL	1		
38	01-341	EXTENSION TUBE 0.5 M ALU	1		
39	3000046	TANK BOTTOM FIREFLEX	2		
40	MK-022	TELESCOPIC TUBE	1		
41	2511523	D320 DRY FLOOR TOOL	1		
42	7501181	BATTERY CHARGER 3A	1		
43	2508005	VITE TCC AUTOFOR.CON BORDINO 4,2X16 CP	1		
44	RIC.7589035		1		

T1 BC LITHIUM SWIFT

	Code	Description	Q.ty	Advisable	Note
45	2703821	RUBBER FOR T1 BC	4		
46	2508530	SCREW TCC 4X10	6		
47	2560255	T1 BC SUPPORT - ELECTRIC CONTACTS	2		
48	2560256	T1 BC SUPPORT- ELECTRIC CONTACT	1		
49	2508224	TE BRASS SCREW M5X10	4		
50	2508007	HEAD HEX SOCKET SCREW M4X25 ZB	1		
51	3005044	SET TRECCIOLE CABLAGGIO RELE'T1 BC	1		
52	2506017	RELAY 24V	1		
53	2508697	GALVANIZED SECURITY NUT M4 DIN985	1		
54	2509012	WASHER D.5.3X15X1.2 A2 DIN9021	3		
55	15881210005		1		
56	2504225	COMPASS FOR LEVER T1 TL10R 4380 L.12(12X8X4,3)	1		
57	10-977	SCREW TCC 4X40	1		
58	23.0034.00	PLATE WASHER D 4 A2 DIN 125A	1		